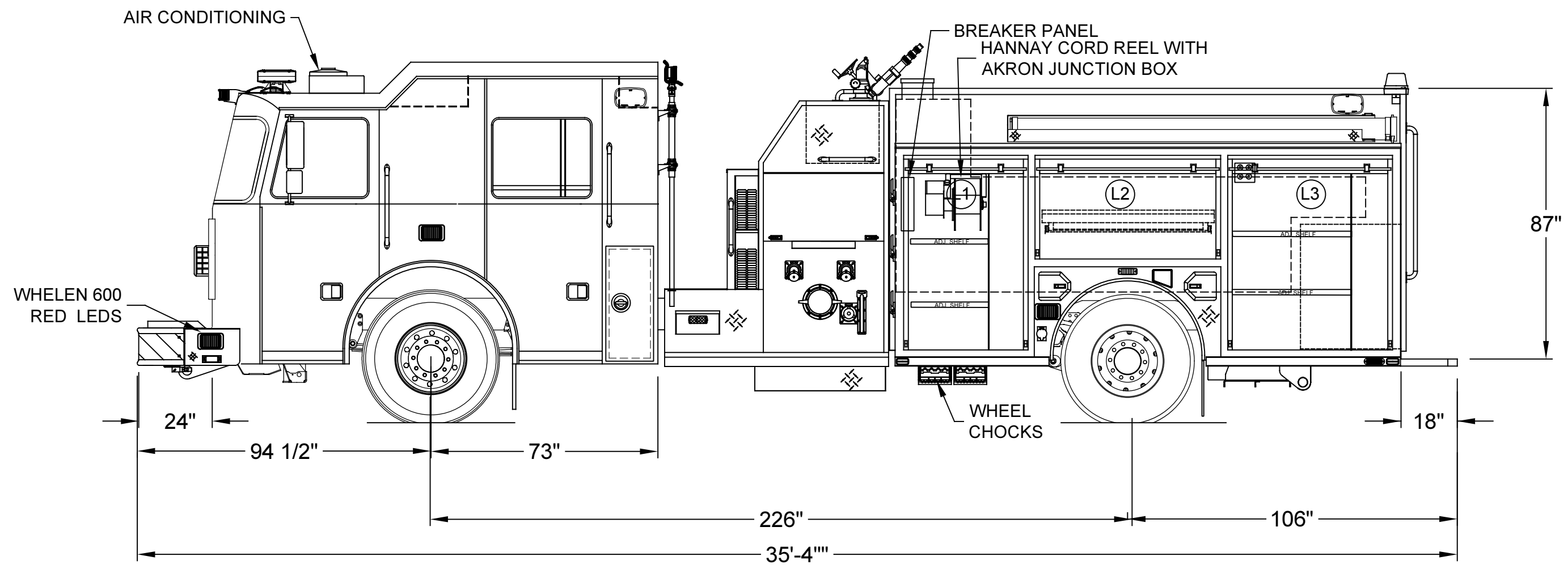
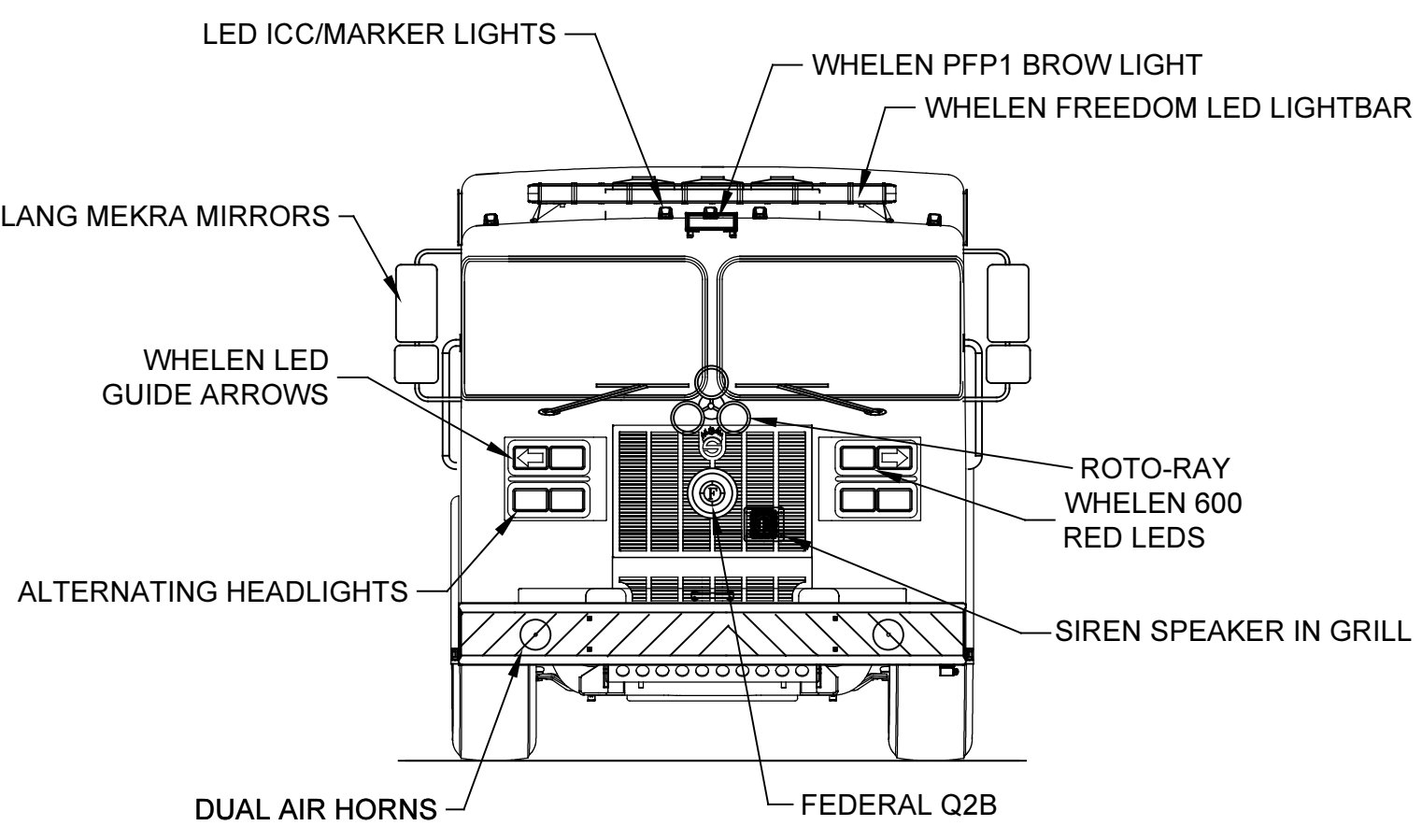
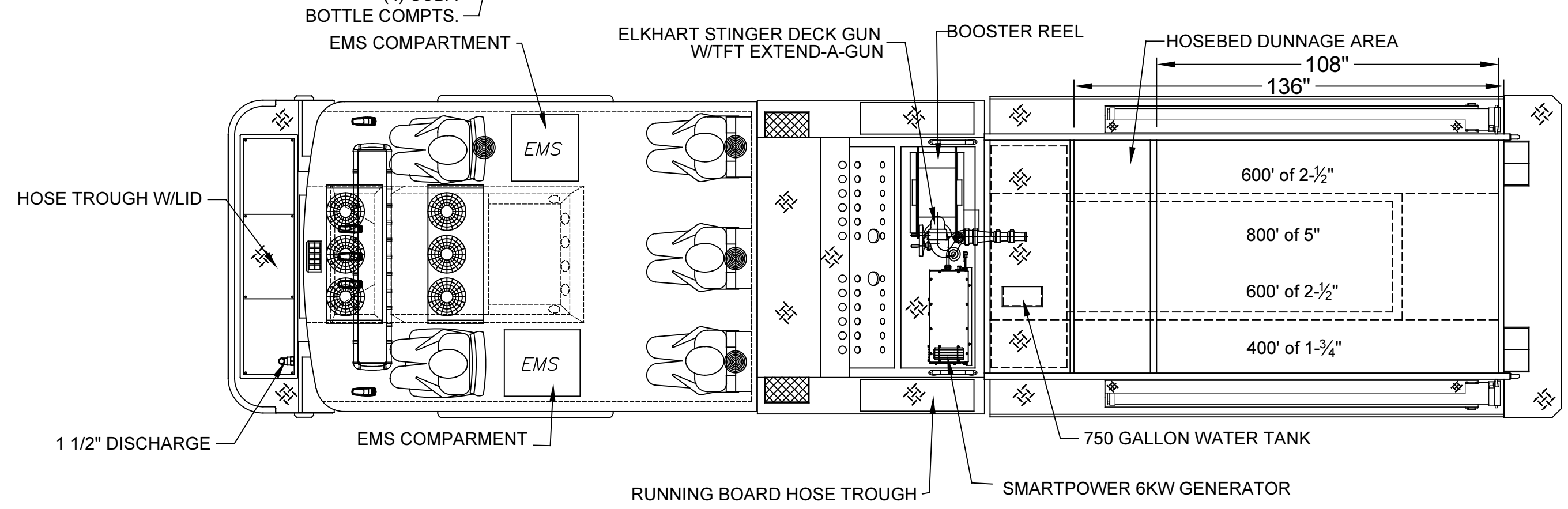


LEFT SIDE COMPARTMENTATION				
COMPT	DOORS	OPENING DIMENSIONS	INSIDE DIMENSIONS	VOLUME
L1	ROLL-UP	37" w X 56 7/8" h	43" w X 66" h X 27 1/4" d	40 CU. FT.
L2	ROLL-UP	57" w X 27 5/8" h	61 1/2" w X 36 1/2" h X 27 1/4" d	30 CU. FT.
L3	ROLL-UP	50" w X 56 7/8" h	56" w X 66" h X 27 1/4" d	52 CU. FT.

RIGHT SIDE COMPARTMENTATION				
COMPT	DOORS	OPENING DIMENSIONS	INSIDE DIMENSIONS	VOLUME
R1	ROLL-UP	37" w X 56 7/8" h	43" w X 66" h X 27 1/4" d (10 1/2" d upper)	26 CU. FT.
R2	ROLL-UP	57" w X 27 5/8" h	61 1/2" w X 36 1/2" h X 10 1/2" d	13 CU. FT.
R3	ROLL-UP	50" w X 56 7/8" h	56" w X 66" h X 27 1/4" d (10 1/2" d upper)	34 CU. FT.

REAR STEP COMPARTMENTS				
COMPT	DOORS	OPENING DIMENSIONS	INSIDE DIMENSIONS	VOLUME
A1	ROLL-UP	37 1/2" w X 31" h	40" h X 40" w X 29 1/2" d	27 CU. FT.

TOTAL: 222 CU. FT.



DIMENSIONS SHOWN ON THIS DRAWING ARE APPROXIMATE AND ARE SUBJECT TO MINOR DEVIATIONS DURING CONSTRUCTION.

IN THE EVENT OF A DISCREPANCY BETWEEN THE SUTPHEN SPECIFICATIONS AND DRAWING, THE SUTPHEN SPECIFICATIONS SHALL PREVAIL.

DRAWING IS FOR REFERENCE ONLY. SOME ITEMS PROPOSED MAY NOT BE SHOWN OR NOTED.

CUSTOMER APPROVAL

NAME: _____

TITLE: _____

DATE: _____

REV.	DESCRIPTION	BY	DATE
A	AFTER PRE-CON	MJC	5/12/17

THIS PRINT IS PROVIDED ON A RESTRICTED BASIS AND IS NOT TO BE USED IN ANY WAY DETRIMENTAL TO THE INTEREST OF SUTPHEN CORPORATION.

DRAWN BY:
ZCR


DATE:
9/30/15

MFG. FACILITY:
DUBLIN

ANGOLA FIRE DEPARTMENT
ANGOLA, IN

CUSTOM PUMPER - S2 BODY

DWG. NO.: HS-6049

	Sutphen	HS-6049 Angola Fire Department	
	Component Report	Home Phone Number: 260-668-5030 Station 260-665-5555	Order#: SOB001326

Bill To
Customer: Angola Fire Department Address: 202 W. Gilmore St Angola, IN 46703

Ship To
Customer: Angola Fire Department Address: 202 W. Gilmore St Angola IN 46703

Comments
Project Coordinator: Mark Clark Sales Person: Andy Herb Revision: Rev-A

Line	Item #	Qty	Item Description/Comments
1		1	**ENG Facility = Dublin
2		1	**ENG Truck Series = PRG2
3	10000215	1	STD WIRING SCHEMATIC
4	10010001	1	CHASSIS, CUSTOM
5	51010310	1	WHEELBASE GREATER THAN 200"
6		1	Wheelbase = 226"
7		1	**ENG AF Number = 54"
8	25010100	1	FRAME, 10" DOUBLE RAILS, SINGLE AXLE (50K PSI)
9	45010001	1	FRONT TOW EYES, BELOW BUMPER
10	45010015	1	FRONT TOW EYE FINISH, PAINTED
11	46010000	1	REAR TOW EYES
12	40010250	1	STEERING - ROSS TAS-85
13	22010000	1	DRIVE LINE, SPICER, 1710 SERIES

Line	Item #	Qty	Item Description/Comments
14	23013340	1	ENGINE, CUMMINS ISL 9 450HP DOC-DPF-DEF-SCR OBD
15	23030006	1	AIR INTAKE/EMBER SEPARATOR
16	23031175	1	FUEL FILTER/WATER SEPARATOR, PRIMARY, FLEETGUARD, FUELPRO FH230
17	23031180	1	12VDC HEATER FOR FLEETGUARD FH230 FUEL/WATER SEPARATOR
18	23031210	1	FUEL FILTER, SECONDARY, FLEETGUARD, FF63009
19	47012435	1	TRANSMISSION, ALLISON GEN 5, EVS3000R W/RETARDER
20	23110100	1	DELETE JACOBS ENGINE BRAKE
21	47024050	1	TRANSMISSION COOLER
22	47025000	1	TRANSMISSION FLUID, CASTROL TRANSYND
23	47030000	1	ALLISON TOUCH PAD SHIFTER
24		1	**ENG Shifter Pad Gearing = 5 Gears Open, 6th Gear Locked, Mode Button For Generator (If Applicable)
25	21021200	1	COOLING SYSTEM
26	21030000	1	FAN CLUTCH
27	21030200	1	RADIATOR COOLANT RECOVERY, PRESSURIZED SYST
28	26010010	1	FUEL TANK, STAINLESS STEEL, 65 GAL
29	26030000	1	FUEL FILL
30	26030100	1	FUEL COOLER
31	24040000	1	DIESEL EXHAUST FLUID TANK
32		1	**ENG DEF Access = DEF Door
33	13010205	1	ALTERNATOR, LEECE NEVILLE 320 AMP 4962PA
34	15010500	1	BATTERIES, INTERSTATE TYPE 31 MHD (4)
35	15031700	1	BATTERY JUMPER TERMINALS
36	15031560	1	BATTERY CHARGER, KUSSMAUL LPC 40 W/REMOTE BAR GRAPH DISPLAY display location: step well drivers side
37	15030430	1	120V SHORELINE INLET, KUSSMAUL SUPER 20 AUTO EJECT

Line	Item #	Qty	Item Description/Comments
38		1	**ENG Shoreline Inlet Location = Driver's Side Of Cab
39		1	**ENG Shoreline Cover Color = Red
40	14010524	1	FRONT AXLE, MERITOR MFS-20-133A 20,000 LB.
41	41010115	1	SUSPENSION FRONT 20,000 LBS. 54" LEAF
42	41030100	1	SUSPENSION, ENHANCED SYSTEM
43	43010305	1	FRONT TIRES GOODYEAR 385/65R22.5 LRJ G296 22.5 x 12.25 WHEELS
44	14510520	1	REAR AXLE, MERITOR RS-24-160 24,000 LB.
45	14530100	1	TOP SPEED, 68 MPH
46	14540400	1	VOGEL LUBE SYSTEM SINGLE AXLE
47	42010000	1	SUSPENSION REAR REYCO 24,000 LBS. LEAF
48	44010320	1	TIRES, REAR, GOODYEAR 12R22.5 LRH G622 MUD & SNOW 24,000 - 27,000 GVWR
49	42910200	1	TIRE PRESSURE MONITOR, REAL WHEELS, LED
50	44210100	1	WHEELS, ALUM, ACCURIDE (max 27K rear)
51	44270100	1	HUB COVERS, FRONT & REAR, POLISHED STS (Single Axle)
52	44270300	1	CHROME LUG NUT CAPS, FRONT & REAR (Single Axle)
53	44271100	1	MUD FLAPS, FRONT (PAIR)
54	44271200	1	MUD FLAPS, REAR (PAIR)
55	16010250	1	BRAKES MERITOR DISC PLUS EX225 FRONT ONLY
56	18010041	1	AIR BRAKE SYST 4 TANKS WABCO 1200 DRYER
57	18035110	1	AIR COMPRESSOR, KUSSMAUL AUTO PUMP AC, 100PSI
58	18220500	1	NO ELEC STABILITY CONTROL SYS
59	18110000	1	WABCO 4 CHANNEL ANTI-LOCK BRAKES
60	54010000	1	MISCELLANEOUS ITEMS ON CHASSIS
61	11023250	1	CAB TSAL4E 73" 10" RR 1/2

Line	Item #	Qty	Item Description/Comments
62	11030025	1	CAB CERTIFICATION - STRUCTURAL INTEGRITY
63	11031025	1	CAB TILT SYSTEM W/AIR TURN VALVE
64		1	**ENG Cab Tilt Controls = Driver's Side Pump Panel
65	11031100	1	MANUAL BACK-UP TILT SYSTEM
66	11031350	1	CAB DOORS, FULL LENGTH
67	11031421	1	CAB DOOR WINDOWS, POWER
68	11031400	1	DELETE CAB SIDE WINDOWS
69	11031460	1	NO WINDOWS, BACK WALL OF CAB
70	11030210	1	EXTERIOR COMPTS, SIDE OF EXT CAB
71	52010010	1	SYNCHRONIZED ELECTRIC INTERMITTENT WIPERS
72	27022000	1	HANDRAILS, CAB, KNURLED STAINLESS STEEL
73	27030600	1	COAT HOOKS FOR GRAB HANDRAILS (4)
74	27030007	1	HANDRAILS, REAR CAB INTERIOR DOOR WINDOW KNURLED STS
75	38010015	1	MIRRORS LANG MEKRA 300 SERIES REMOTE
76	11024410	1	**Rev-A** RAISED GRILLE, LEVEL STYLE FACADE (ISL)
77	20010085	1	BUMPER, 24" EXTENSION
78	20040215	1	STORAGE WELL, DEEP CENTER, FULL WIDTH (24" BUMPER)
79	20040300	1	1" LIP AROUND BUMPER TROUGH
80	20030100	1	COVER FOR BUMPER TROUGH, TREADPLATE, 2" RAISE
81	12028888	1	SPECIAL Air Horns GROVER ROUND AIR HORNS
82		1	**Rev-A** **CLAR NOTES, Air horns shall be mounted outboard through bumper.
83		1	**Rev-A** **ENG Air Horns Location: Outboard through the bumper
84	12030205	1	AIR HORNS WIRED TO STEERING WHEEL BUTTON
85	12510500	1	SIREN, FEDERAL EQ2B

Line	Item #	Qty	Item Description/Comments
86	12610600	1	SIREN SPEAKER, FEDERAL BP200 (EQ2B)
87	12728888	1	**Rev-A** Mechanical Siren FEDERAL Q2B, IN GRILLE
88		1	**ENG Siren Brake Switch for Driver.
89	12730310	1	FOOT SWITCH, OFFICER'S SIDE, FOR MECH SIREN
90		1	**ENG Siren Brake Switch for Officer.
91	32520600	1	**Rev-A** HEADLIGHTS, LED, COMBO STS HOUSINGS
92	48089500	1	FRONT TURN SIGNALS, WHELEN, LED, GUIDE ARROW (2)
93	32530500	1	ALTERNATING FLASHER FOR HEADLIGHT
94	32530700	1	DAYTIME RUNNING LIGHTS
95	11035405	1	DIAMONDPLATE REAR EXTERIOR WALL OF CAB (AERIAL OR TOP MOUNT)
96	31010287	1	INTERIOR, MULTISPEC GRAY SPECKLE PAINT W/GRAY-BLACK DURAWEAR
97	11032929	1	DOOR PANEL, FULL STS
98	11032955	1	REFLECTIVE MATL, INTERIOR CAB DOORS, SCOTCHLITE CHEVRONS
99		1	**ENG Reflective Striping Color = Red/White
100		1	**ENG Reflective Striping Verbiage = Sutphen
101	31010290	1	CAB INTERIOR FLOOR COVERING, GRAY RUBBERIZED
102	22510110	1	ENGINE ENCLOSURE, SMALL PROFILE
103	22510530	1	ENGINE ENCLOSURE COVERING, SCORPION BLACK URETHANE BLEND
104	11031680	1	CENTER CONSOLE W/MAP BOOK STORAGE, TOP OF ENGINE ENCLOSURE
105	11031509	1	GLOVE BOX, FDNY STYLE
106	31088888	1	SPECIAL ITEM, GLOVE BOX HOLDERS IN UPPER CREW DOORS
107		1	**Rev-A** SPECIAL ITEM INSTALL PAC TRAC BETWEEN THE REAR SEATS ON THE BACK WALL OF CAB
108	30010120	1	INSTRUMENTATION, BEEDE GAUGES W/ CENTER & OVERHEAD CONSOLES
109		1	**ENG Overhead Console Panel's Finish Black Wrinkle

Line	Item #	Qty	Item Description/Comments
110		1	**Rev-A** **ENG Overhead Console Position 1 Master Emergency Disable roto-ray Front Scene Left Scene Right Scene Rear Scene
111		1	**Rev-A** **ENG Overhead Console Position 2 Traffic Advisor & Siren
112		1	**ENG Overhead Console Position 3 HVAC Controls
113		1	**ENG Overhead Console Position 4 Chassis Warning
114		1	**ENG Overhead Console Position 5 Blank
115		1	**ENG Overhead Console Position 6 Blank
116		1	**ENG Overhead Console Position 7 Blank
117		1	**ENG Lower Command Console Finish Black Urethane
118		1	**ENG Lower Console Panel's Finish Black Wrinkle
119		1	**Rev-A** **ENG Lower Console Position 1 Transmission Touchpad Rotate 180* ignition switch if possible Pump Shift
120		1	**ENG Lower Console Position 2 High Idle
121		1	**Rev-A** **ENG Lower Console Position 3 Siren mount as low as possible 12V Power Points DS/OS lower corners 12V USB Power Point OS Possible VHF radio if not mount this under Upper position 4 Possible UHF Radio
122		1	**ENG Lower Console Position 4 Blank
123		1	**ENG Lower Console Position 5 Electrical Siren Siren Brake
124	30010700	1	CAB PUMP SHIFT
125	29910000	1	LOAD MANAGER, CLASS-1
126	30031100	1	HIGH IDLE SWITCH
127	30031775	1	12V POWER POINTS, (2)
128		1	**ENG Power Point Location #1: Driver's Side Lower Command Console, Position 3
129		1	**ENG Power Point Location #2: Officer's Side Lower Command Console, Position 3

Line	Item #	Qty	Item Description/Comments
130	30031801	1	12V DUAL PORT USB POWER POINT, (1)
131		1	**ENG USB Power Point Location #1: Officer's Side Lower Command Console, Position 3
132	11040000	1	CAB ACCESSORY FUSE PANEL
133	84541540	1	POWER & GROUND STUDS, UPPER COMMAND CONSOLE
134		1	**ENG Requirements (AMPS) for Power/Ground Studs in Upper Command Console: One 12-volt 60-amp, direct to the battery, One 12-volt 30-amp controlled by the ignition switch, One 12-volt 125-amp ground
135	84541550	1	POWER & GROUND STUDS, UNDER OFFICER'S SEAT
136		1	**ENG Requirements (AMPS) for Power/Ground Studs Under Officers Seat: One 12-volt 40-amp controlled by the battery switch, One 12-volt 60-amp controlled by the ignition switch, One 12-volt 60-amp, direct to the battery, One 12-volt 100-amp ground
137	30110000	1	VEHICLE DATA RECORDER, AKRON/WELDON
138	33510030	1	INTERIOR CAB LIGHTS, RED/CLEAR LED (2)
139	34010030	1	INTERIOR CREW LIGHTS, RED/CLEAR LED (2)
140	28010740	1	DEFROSTER, HEATER & A/C (COMPACT)
141	28090003	1	HEAT TO FEET
142	28030500	1	DEFROSTER DUCTWORK, ENTIRE WINDSHIELD
143	11031687	1	TOOL MOUNTING PLATE, 25" x 19.5", TOP OF HEAT/AC UNIT
144	28088888	1	SPECIAL ITEM, METAL VENT COVERS FOR HOOD MOUNTED HEAT/AC
145	38510105	1	DRIVER'S SEAT, BOSTROM SIERRA HIGH BACK ABTS AIR RIDE (DURAWEAR)
146	38320000	1	HELMET STORED IN COMPARTMENT
147	39010120	1	OFFICER'S SEAT, BOSTROM TANKER 450, ABTS SCBA (DURAWEAR)
148	39030020	1	OFFICER'S SEAT COMPT, FRONT DOOR
149	38320000	1	HELMET STORED IN COMPARTMENT
150	11031821	1	**Rev-A EMS CABINET, REAR FACING, BEHIND DRIVER (110 volt off shore power household 5-20 Top left corner)
151	11031822	1	EMS CABINET, REAR FACING, BEHIND OFFICER

Line	Item #	Qty	Item Description/Comments
152	39521455	1	CREW SEAT 3, BOSTROM TANKER 450, ABTS SCBA FIXED (DURAWEAR)
153	38320000	1	HELMET STORED IN COMPARTMENT
154	39521456	1	CREW SEAT 4, BOSTROM TANKER 450, ABTS SCBA FIXED (DURAWEAR)
155	38320000	1	HELMET STORED IN COMPARTMENT
156	39521457	1	CREW SEAT 5, BOSTROM TANKER 450, ABTS SCBA FIXED (DURAWEAR)
157	38320000	1	HELMET STORED IN COMPARTMENT
158		1	**CLAR NOTES, 3 CREW SEATS TO BE FORWARD FACING, EVENLY SPACED ON BACK WALL.
159	39550100	1	SEAT COLOR, GRAY
160	39610000	4	**Rev-A** SCBA BRACKETS, BOSTROM, IMMI Smart Dock
161	38410000	1	SEAT BELT WARNING SYSTEM, AKRON / WELDON
162	39710015	1	CREW SEAT COMPT, FRONT DROP-DOWN DOORS (73" CAB)
163	11031745	1	OVERHEAD STORAGE, FRONT OF 10" RR W/DOORS
164	11088888	1	**Rev-A** SPECIAL ITEM, MOUNT (2) CUSTOMER RADIOS With customer supplied antennas
165	11088888	1	**Rev-A** SPECIAL ITEM, OVERHEAD CAB STORAGE, REAR With door make drawing show this
166	60090000	1	PUMP, HALE QMAX-1500 GPM SINGLE STAGE
167	60025000	1	GEARBOX, HALE, G-SERIES, REAR MOUNTED
168	60026000	1	PUMP PACKING, HALE
169	60035121	1	PUMP TEST, MISTRAS GROUP, INC
170	61510000	1	AUXILIARY COOLER (HEAT EXCHANGER)
171	62010002	1	STAINLESS STEEL PIPING
172	66090010	1	3" TANK-TO-PUMP W/CHECK VALVE
173	61729120	1	VALVE, AKRON, HEAVY DUTY
174	61770910	1	ACTUATOR, VALVE, T-HANDLE, CLASS 1
175	73090001	1	TANK FILL 2"

Line	Item #	Qty	Item Description/Comments
176	61729120	1	VALVE, AKRON, HEAVY DUTY
177	61770910	1	ACTUATOR, VALVE, T-HANDLE, CLASS 1
178	61090003	1	PRESSURE GOVERNOR, CLASS 1 TPGJ1939
179	61290010	1	**Rev-A** INTAKE PRESSURE CONTROL, Elkhart
180	63021500	1	6" MAIN SUCTION, LEFT SIDE
181	63090001	1	HALE MASTER INTAKE VALVE, ELEC (SIDE SUCTION)
182	65090000	1	2.5" LEFT SIDE INLET
183	61729120	1	VALVE, AKRON, HEAVY DUTY
184	61770905	1	ACTUATOR, VALVE, SWING CONTROL
185	60036010	1	THREADS, NST
186	63025500	1	6" MAIN SUCTION, RIGHT SIDE
187	63090001	1	HALE MASTER INTAKE VALVE, ELEC (SIDE SUCTION)
188	64090000	1	2.5" RIGHT SIDE INLET
189	61729120	1	VALVE, AKRON, HEAVY DUTY
190	61770905	1	ACTUATOR, VALVE, SWING CONTROL
191	60036010	1	THREADS, NST
192	70525900	1	**Rev-A** 2.5" DISCHARGE, LEFT - Position 1 Discharges to come out straight with 30* adapters Same as Eastpoint HS-6003
193	61729120	1	VALVE, AKRON, HEAVY DUTY
194	61770910	1	ACTUATOR, VALVE, T-HANDLE, CLASS 1
195	77090000	1	GAUGE, DISCH, CLASS 1 2.5"
196	60036010	1	THREADS, NST
197	61840100	1	**Rev-A** ADAPTER, 2.5"NST FE X 1.5" NST M 30* W/CAP & CHAIN
198	70525900	1	**Rev-A** 2.5" DISCHARGE, LEFT - Position 2 Discharges to come out straight with 30* adapters Same as Eastpoint HS-6003
199	61729120	1	VALVE, AKRON, HEAVY DUTY

Line	Item #	Qty	Item Description/Comments
200	61770910	1	ACTUATOR, VALVE, T-HANDLE, CLASS 1
201	77090000	1	GAUGE, DISCH, CLASS 1 2.5"
202	60036010	1	THREADS, NST
203	61840100	1	**Rev-A** ADAPTER, 2.5"NST FE X 1.5" NST M 30* W/CAP & CHAIN
204	71025905	1	**Rev-A** 3" DISCHARGE, RIGHT - Position 3 Discharges to come out straight Same as Eastpoint HS-6003
205	61729160	1	VALVE, AKRON, SLOW CLOSE
206	61770910	1	ACTUATOR, VALVE, T-HANDLE, CLASS 1
207	77090000	1	GAUGE, DISCH, CLASS 1 2.5"
208	60036010	1	THREADS, NST
209	71025900	1	**Rev-A** 2.5" DISCHARGE, RIGHT - Position 4 Discharges to come out straight with 30* adapters Same as Eastpoint HS-6003
210	61729120	1	VALVE, AKRON, HEAVY DUTY
211	61770910	1	ACTUATOR, VALVE, T-HANDLE, CLASS 1
212	77090000	1	GAUGE, DISCH, CLASS 1 2.5"
213	60036010	1	THREADS, NST
214	61840100	1	**Rev-A** ADAPTER, 2.5"NST FE X 1.5" NST M 30* W/CAP & CHAIN
215	71590000	1	DISCHARGE, 2.5" LEFT REAR
216	61729120	1	VALVE, AKRON, HEAVY DUTY
217	61770910	1	ACTUATOR, VALVE, T-HANDLE, CLASS 1
218	77090000	1	GAUGE, DISCH, CLASS 1 2.5"
219	60036010	1	THREADS, NST
220	61840100	1	ADAPTER, 2.5"NST FE X 1.5" NST M W/CAP & CHAIN
221	71890000	1	DISCHARGE 2.5" RIGHT REAR
222	61729120	1	VALVE, AKRON, HEAVY DUTY
223	61770910	1	ACTUATOR, VALVE, T-HANDLE, CLASS 1

Line	Item #	Qty	Item Description/Comments
224	77090000	1	GAUGE, DISCH, CLASS 1 2.5"
225	60036010	1	THREADS, NST
226	61840100	1	ADAPTER, 2.5"NST FE X 1.5" NST M W/CAP & CHAIN
227	72290000	1	1.5" FRONT BUMPER DISCHARGE, 2" PLUMBING
228	61729120	1	VALVE, AKRON, HEAVY DUTY
229	61770910	1	ACTUATOR, VALVE, T-HANDLE, CLASS 1
230	77090000	1	GAUGE, DISCH, CLASS 1 2.5"
231	60036010	1	THREADS, NST
232		1	**ENG Front Bumper Swivel Location/Side = Driver's Side
233		1	**ENG Front Discharge Swivel Location/Trough = In Trough
234	72590002	1	DECK GUN DISCHARGE 3"
235	61729160	1	VALVE, AKRON, SLOW CLOSE
236	61770910	1	ACTUATOR, VALVE, T-HANDLE, CLASS 1
237	77090000	1	GAUGE, DISCH, CLASS 1 2.5"
238	72570100	1	**Rev-A** DECK GUN TERMINATION, Threaded
239		1	**Rev-A** TASK FORCE TIPS EXTEND-A-GUN
240	72890001	1	SPEEDLAYS, TWO 2" W/1.5" SWIVEL
241		1	**ENG Crosslay Hose Load Requirement = 200 ft.
242	61729120	2	VALVE, AKRON, HEAVY DUTY (2)
243	61770910	2	ACTUATOR, VALVE, T-HANDLE, CLASS 1 (2)
244	77090000	2	GAUGE, DISCH, CLASS 1 2.5" (2)
245	60036010	2	THREADS, NST (2)
246	72910700	1	COVER, VINYL FOR SPEEDLAYS
247		1	**ENG Crosslay/Speedlay Cover Color = Black

Line	Item #	Qty	Item Description/Comments
248		1	**ENG Crosslay/Speedlay Cover Fastener = Bungee With Tabs
249	84090003	1	**Rev-A** BOOSTER REEL, LOW PRESSURE, W/150' OF 1" HOSE & NOZZLE, MTD IN DUNNAGE AREA Check sizes of booster reel can use possible 100 ft. pump module dunnage
250	61729120	1	VALVE, AKRON, HEAVY DUTY
251	61770930	1	ACTUATOR, VALVE, AIR, W/ TOGGLE SWITCH
252	60036010	1	THREADS, NST
253		1	**ENG Booster Reel Nozzle = Akron1701
254	61742000	1	MASTER PUMP DRAIN, MULTIPORT
255	61790510	13	DRAIN VALVES, HALE, LIFT-UP(13)
256	74929120	1	HALE PUMP MODULE CONFIGURATION, TOP MOUNT
257	74914200	1	PRG TM1 - 74" TOP MOUNT PUMP PANEL
258	74928888	1	**Rev-A** SPECIAL Pump Panel Finish BLACK POWDER COAT PANELS all panels
259	74931055	1	COLOR CODING (PRG)
260		1	**ENG Color Coding Standard = Yes
261	75040200	1	TROUGH IN RUNNING BOARD, LEFT SIDE
262		1	**ENG Specify Hose Type & Capacity Desired for Left Running Board Trough = 50' 5"
263		1	**ENG Left Trough Cover = Velcro Straps
264	75040210	1	TROUGH IN RUNNING BOARD, RIGHT SIDE
265		1	**ENG Specify Hose Type & Capacity Desired for Right Running Board Trough = 50' 5"
266		1	**ENG Right Trough Cover = Velcro Straps
267	75590010	1	PUMP PANEL LIGHTS, LED (PRG)
268	75588888	1	SPECIAL ITEM, PUMP PANEL LIGHT WITH PUMP ENGAGEMENT
269		1	**CLAR NOTES, PUMP ENGAGEMENT LIGHT There shall be a light at the pump panel that is only on when the pump is engaged.
270	76090002	1	PUMP PANEL GAUGES & CONTROLS (PRG)
271	60090030	1	PUMP PRIMER, TRIDENT, AIR

Line	Item #	Qty	Item Description/Comments
272	60028310	1	(1) PRIMER BUTTON - MAIN SUCTION
273	76031900	1	AIR HORN PUSH BUTTON SWITCH ON PUMP PANEL
274		1	**Rev-A** **ENG Air Horn Push Button Location = Best Location with red button
275	76590000	1	GAUGES, MASTER, CLASS 1 4.5" (PRG)
276	77590000	1	GAUGE, WATER LEVEL, CLASS 1 INTELLI-TANK
277	83525000	1	WATER TANK BRAND, UNSPECIFIED
278	83590004	1	WATER TANK, 750 GAL, POLY
279	73030300	1	DIRECT TANK FILL 2.5" REAR
280	61729120	1	VALVE, AKRON, HEAVY DUTY
281	61770905	1	ACTUATOR, VALVE, SWING CONTROL
282	80190200	1	BODY S2 - ALUM 43/53 LAD CHUTE
283	80029900	1	BODY SUBFRAME, PUMPER/TANKER
284	81130200	2	**Rev-A** ADJUSTABLE SHELF [L1] (2) 26" wide shelf side then divider
285	81140100	1	FIXED VERTICAL DIVIDER [L1] (1)
286	81150200	1	250# SLIDE-MASTER SLIDE OUT/TILT DOWN DRAWER [L2] (1)
287	81130200	2	**Rev-A** ADJUSTABLE SHELF [L3] (2) Add (1) 110 volt shore line (4) way gang household 5-20 upper left
288	81140100	1	**Rev-A** FIXED VERTICAL DIVIDER [L3] (1) for little giant 12" spacing
289	81130200	1	**Rev-A** ADJUSTABLE SHELF [R1] (1) upper ½ shelf
290	81150300	1	**Rev-A** 600# SLIDE-MASTER TRAY [R1] (1)
291	81130200	1	**Rev-A** ADJUSTABLE SHELF [R3] (1) upper ½ shelf
292	81150300	1	600# SLIDE-MASTER TRAY [R3] (1)
293	81130200	1	**Rev-A** ADJUSTABLE SHELF [A1] (1)
294	81150300	1	600# SLIDE-MASTER TRAY [A1] (1)
295	81165705	1	UNISTRUT TRACK IN COMPTS

Line	Item #	Qty	Item Description/Comments
296	80290012	1	COMPT DOORS, ROM ROLL-UP, PAINTED
297	84530910	1	COMPT LIGHTING, LED LIGHT STRIPS, 2 PER COMPT
298	81390000	1	HOSEBED, REMOVABLE ALUM FLOORING
299		1	**ENG List the Hose Bed Hose Load Req. = 400' of 1-3/4" 600' of 2-1/2" 800' of 5" 600' of 2-1/2"
300	81410200	1	**Rev-A** COVER, ALUMINUM 2 PC, MAIN HOSE BED Cover should extend over the additional hosebed area
301		1	**ENG Hosebed Cover Color = Black
302		1	**ENG Hosebed Cover Fastener = Bungee With Tabs
303	81330303	1	**Rev-A** HOSE BED DIVIDERS, ADJ (3) USE FIXED DIVIDER FOR DOORS
304	81388888	1	SPECIAL ITEM, HOSEBED LIGHTING
305		1	**CLAR NOTES, HOSEBED LIGHTING LED light strips shall be provided on each side and the front of the hosebed.
306	81388888	1	SPECIAL ITEM, HOSEBED BULKHEAD
307		1	**Rev-A** **CLAR NOTES, LIKE FT WAYNE, HS5626. They want the hosebed to end as if they had a 1000 gallon tank. This will provided them with additional dunnage area. Make this area 24"
308	81910100	1	HANDRAILS, KNURLED STS
309	82290001	1	STEPS, FRONT BODY
310	82390001	1	STEPS, REAR BODY (14x11 & 14x8)
311	82510000	1	RUB RAILS, ANODIZED ALUM
312	83089500	1	ALUMINUM TREADPLATE (PRG2)
313	80290013	1	4 SCBA CYLINDER COMPTS (2 RIGHT, 2 LEFT)
314	88520100	1	**Rev-A** SPECIAL SUCTION HOSE, (2) 12' SECT 6" KOCEK LIGHTWEIGHT
315		1	**ENG Suction Hose Location = 12' suction hose Above Compartments
316	88540100	1	SUCTION HOSE MOUNTING, DIAMOND PLATE TROUGHS
317	88550300	1	STRAINER NOT PROVIDED
318	89011500	1	ALCO-LITE PEL-24 24'2 SEC & PRL-14 14' ROOF & 10' FOLDING

Line	Item #	Qty	Item Description/Comments
319	89590002	1	LADDER CHUTE W/BACKBOARD STORAGE
320	84550110	1	LICENSE PLATE BRACKET W/ LIGHT, LED
321	84510100	1	ELECTRICAL DESCRIPTION
322	84520000	1	BACK UP ALARM, ECCO SA917
323	85010302	1	TAIL/TURN/BACKUP, WHELEN 600, LED, QUAD
324	85110100	1	ICC LIGHTS, LED
325	85510100	1	STEP LIGHTS, LED, WHELEN 2G AT PUMP PANEL, LED STRIP FRONT & REAR BODY
326	85710010	1	UNDERCARRIAGE GROUND LIGHTS, LED
327	86528888	1	SPECIAL Work Lights Delete Unity Lights
328	87090004	1	WHELEN FREEDOM 12 LED LIGHT BAR - L31HRFN BEACON
329		1	**Rev-A** **ENG Lightbar Details = (10) Red Lights (2) White Lights Clear Lens on both Lightbar and beacons
330	87590003	1	WHELEN LED LOWER WARNING PACKAGE
331		1	**ENG Warning Light Color = Red
332		1	**ENG Warning Light Lens Color = Red
333		1	**ENG Warning Light Locations = additional 600 warning lights above front tires additional 600 warning lights on back of body.
334	87537731	2	WARNING LIGHTS, WHELEN 600, SUPER LED (PAIR) (2)
335		1	**ENG Warning Light Color = Red
336		1	**ENG Warning Light Lens Color = Red
337		1	**ENG Warning Light Mnting Location = On the cab between the front and crew doors
338	87537505	1	WARNING LIGHT, ROTO-RAY, LED
339		1	**Rev-A** **ENG Warning Light Colors = Mount above the grille 2-red 1-white clear lens
340	87040000	1	TRAFFIC ADVISOR, WHELEN LED TAL65 36"
341		1	**ENG Traffic Advisor Head Mnting Location = Above Driver
342	88391000	1	LIGHT, WHELEN PFP1, BROW 12V LED (1)

Line	Item #	Qty	Item Description/Comments
343		1	**ENG Light Switching = Above the Drive Position 1
344	88391080	2	LIGHT, WHELEN, PFP2, TELESCOPIC, 12V LED (2)
345		1	**Rev-A** **ENG Light Mounting Location & Switching = Switching on the head Locate in back of cab treadplate on upper cab to protect the paint
346	86537816	3	SCENE LIGHTS, WHELEN M9 LED, SURFACE MOUNT (PAIR) (3)
347		1	**Rev-A** **ENG Light Mounting Location & Switching = Three (3) pair of Whelen M9 LED scenelights shall be provided and installed in the following locations: -1 each side of the cab extension. -1 each side of the hard suction hose. -2 on the rear body, Also come on when placed in reverse
348	88230200	1	GENERATOR, SMART POWER, 6KW TM HYD
349	88250400	1	**Rev-A** CIRCUIT BREAKER PANEL WITH 8 SPACES May need to remove door for reel
350	88251100	1	BREAKER PANEL, STD LOCATION (L1)
351	88250100	2	120 VOLT OUTLET W/WEATHERPROOF COVER - EACH (2)
352		1	**ENG Nema Number = L5-15 Nema Twist Lock
353		1	**ENG Outlet Locations = Above rear wheel wells in front of axle.
354	88490000	1	HANNAY ECR-1614-17-18 REEL W/200' 12/3 (1)
355		1	**Rev-A** **ENG Reel Mounting Location #1 = Ceiling L-1
356		1	**ENG Reel Motor Location #1 = Right Rear
357	88432000	1	AKRON FOUR-WAY RECEPTACLE BOX, WIRED TO REEL CABLE (1)
358		1	**Rev-A** **ENG Receptacle Box, Hardwired, Pig Tail Or Recessed Plug = Hardwired W/all (4) outlets NEMA # L5-20
359	89910000	1	CORROSION REDUCTION PROGRAM (SPECS)
360	90010020	1	PAINT SCHEME
361	90030005	1	TWO TONE CAB TO BOTTOM OF WINDSHIELD
362		1	**ENG List Special Paint Details = None
363	90030155	1	PAINT FRAME RAILS & BODY SUBFRAME -BODY COLOR
364	90510010	1	4" LETTERING , 22K (UP TO 40

Line	Item #	Qty	Item Description/Comments
365	90530010	40	ADDITIONAL 4" 22KT LETTERS (EACH) (40)
366	90610300	1	8" SCOTCHLITE STRIPE AROUND TRUCK
367	90630500	1	ONE PIECE "Z" STRIPE (UNDER 11-3/4")
368	90680120	1	CHEVRON STRIPING, REAR BODY OUTBOARD, REFLEXITE
369		1	**ENG Chevron Striping, Rear Body Color = #030 Red Transparent & #L2 Fluorescent Lime
370	90670020	1	CHEVRON STRIPING, FRONT BUMPER, REFLEXITE
371		1	**ENG Chevron Striping, Front Bumper Color = #030 Red Transparent & #L2 Fluorescent Lime
372		1	**Rev-A** **ENG List Special Lettering/Striping Details = AGI to install make sure ladder door gets chevron
373	91010000	1	MISC EQUIP - (1) PINT TOUCH-UP PAINT, STAINLESS STEEL NUTS & BOLTS
374	91030700	1	ZIAMATIC SAC-44 FOLDING WHEEL CHOCKS MTD W/ SQCH-44H HOLDERS (PAIR)
375		1	**ENG Mounting Locations = Under L1
376	99010000	1	MANUALS (1-PRINTED & 1-CD) WITH DVD
377	99031195	1	DEALER DELIVERY
378	99510000	1	ONE YEAR WARRANTY
379	PDB000177	1	DEALER SUPPLIED - 3" X 5" STORZ ADAPTER
380	PDB000585	1	**Rev-A** DEALER SUPPLIED - PAC TRAC MOUNTING in L1 all 3 walls with divider and R-2 back wall R-3 Back wall area upper
381	PDB000089	1	DEALER SUPPLIED - TURTLE TILE
382	PDB000155	1	DEALER SUPPLIED - TOP MOUNT WALKWAY COMPARTMENTS
383	PDB000314	1	DEALER SUPPLIED - ROLL UP DOOR GUARDS - FMI